



WELCOME TO  
**5425 KINDOS STREET**  
5425KINDOSST.COM

**BELINDA MULFORD**  
Sales Representative

416.825.4371  
belinda@belindamulford.com  
mulfordeby.com

**SARAH EBY**  
Sales Representative

**RICHARD MULFORD**  
Sales Representative



# JUST LISTED

5425 KINDOS STREET



This stunning family home is loaded with upgrades and situated on a premium lot. The large eat-in kitchen features stainless steel appliances and sliding doors to yard. 9 foot ceilings on main floor, hardwood floors throughout and laminate on the second floor! Gas fireplace in family room. Custom stone patio and landscaping! Entrance from garage into house! Professionally decorated! Located walking distance to Bronte Park!



Beds  
3



Baths  
3



Taxes  
\$4,917.22

**BELINDA MULFORD**  
Sales Representative

416.825.4371  
belinda@belindamulford.com  
mulfordeby.com

**SARAH EBY**  
Sales Representative

**RICHARD MULFORD**  
Sales Representative





**BELINDA MULFORD**  
Sales Representative

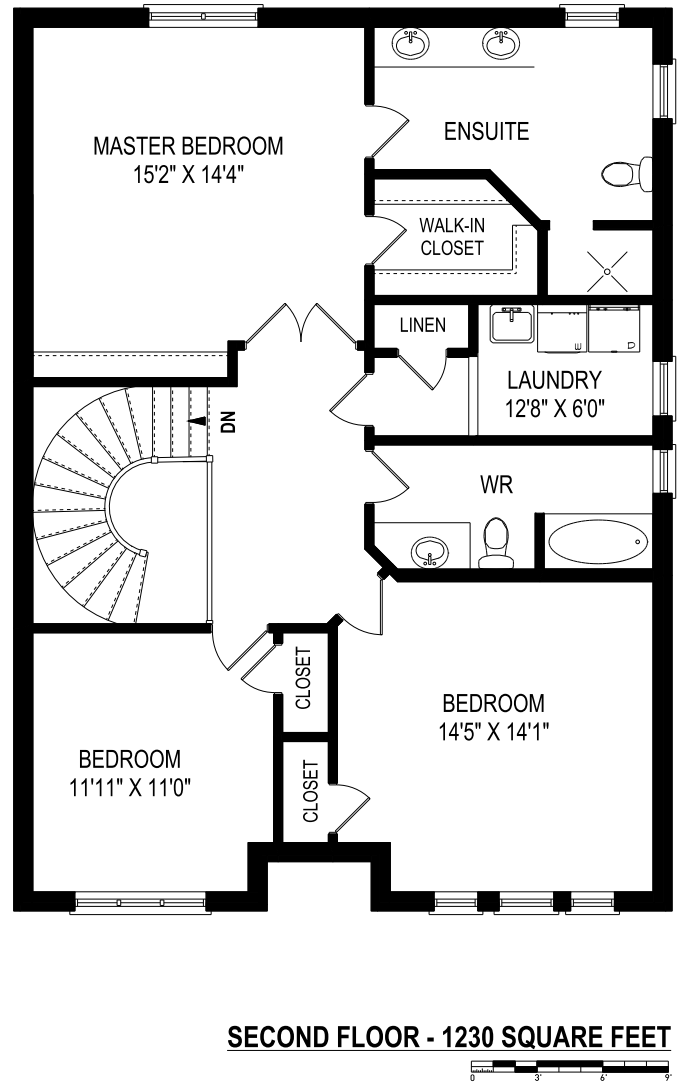
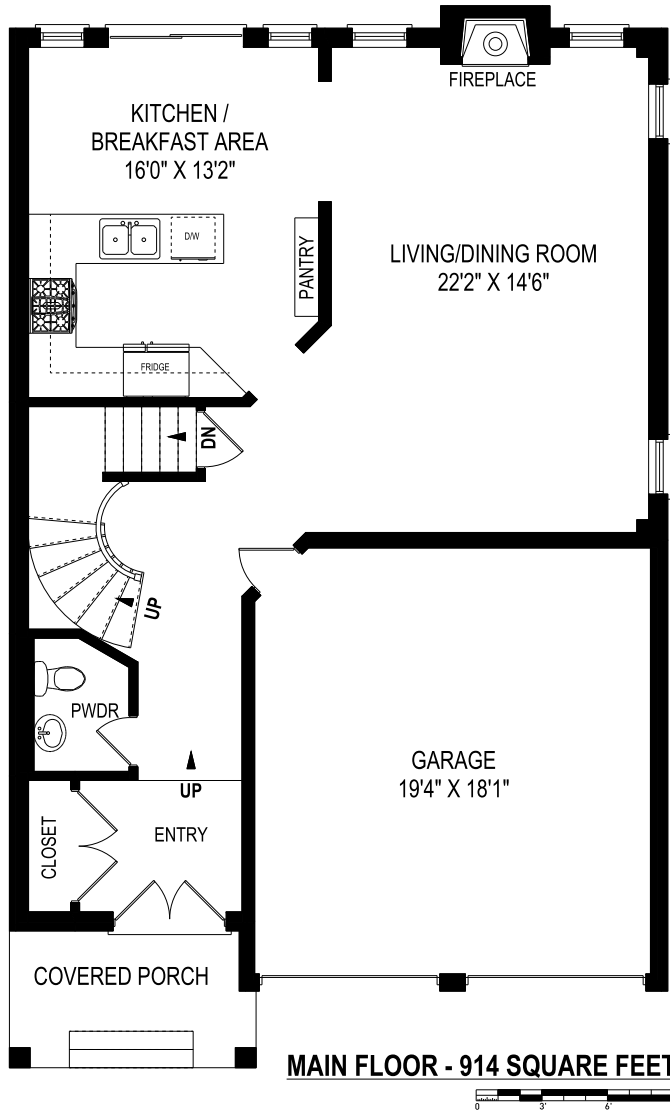
416.825.4371  
belinda@belindamulford.com  
mulfordeby.com

**SARAH EBY**  
Sales Representative

**RICHARD MULFORD**  
Sales Representative

# FLOOR PLANS

5425 KINDOS STREET



**BELINDA MULFORD**  
Sales Representative

416.825.4371  
belinda@belindamulford.com  
mulfordeby.com

**SARAH EBY**  
Sales Representative

**RICHARD MULFORD**  
Sales Representative