



WELCOME TO
114 WIMBLETON ROAD

114WIMBLETONRD.COM

MULFORD & EBY
REAL ESTATE

BELINDA MULFORD
Sales Representative

416.825.4371
belinda@belindamulford.com
mulfordeby.com

SARAH EBY
Sales Representative

RICHARD MULFORD
Sales Representative

Sutton OLD
MILL

JUST LISTED

114 WIMBLETON ROAD



Detached two storey, five bedroom house in sought after humber valley village. Great location on the street with outstanding 60 X 140 private manicured lot. Beautiful, mature oak tree in The back corner! With over 3100 square Feet of total living space, this home has lots of possibilities! great layout with high ceilings, large family room and two fireplaces! Main floor powder room & large master with walk-in closet & master en-suite! Great schools, walking distance to TTC and Humbertown shopping!



Beds
5



Baths
3



Taxes
\$7,766.08

BELINDA MULFORD

Sales Representative

416.825.4371

belinda@belindamulford.com

mulfordeby.com

SARAH EBY

Sales Representative

RICHARD MULFORD

Sales Representative

Sutton OLD
MILL



BELINDA MULFORD
Sales Representative

416.825.4371
belinda@belindamulford.com
mulfordeby.com

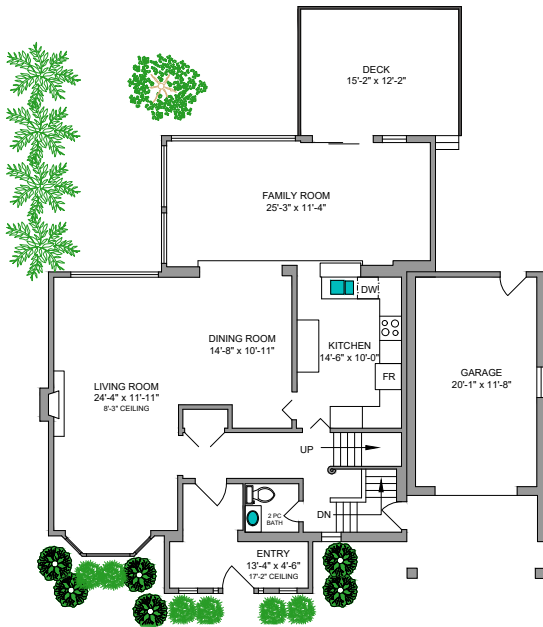
SARAH EBY
Sales Representative
RICHARD MULFORD
Sales Representative



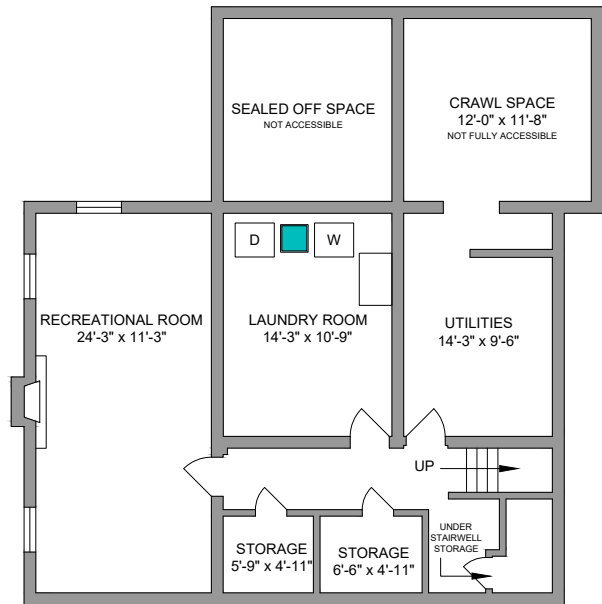
FLOOR PLANS

114 WIMBLETON ROAD

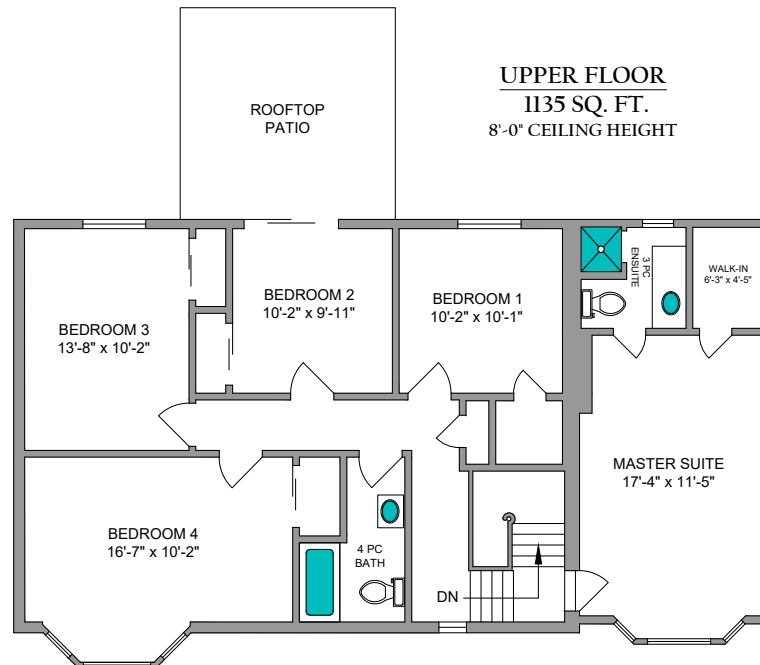
MAIN FLOOR
1224 SQ. FT.
8'-3"-17'2" CEILING HEIGHT



LOWER FLOOR
802 SQ. FT.
6'-11" CEILING HEIGHT



UPPER FLOOR
1135 SQ. FT.
8'-0" CEILING HEIGHT



BELINDA MULFORD
Sales Representative

416.825.4371
belinda@belindamulford.com
mulfordeby.com

SARAH EBY
Sales Representative

RICHARD MULFORD
Sales Representative

