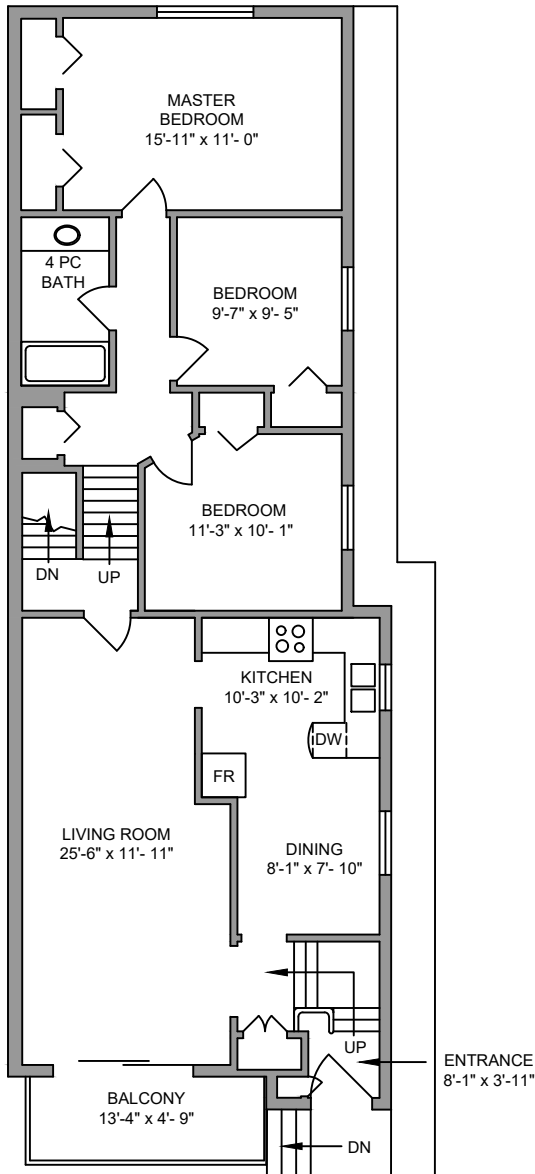
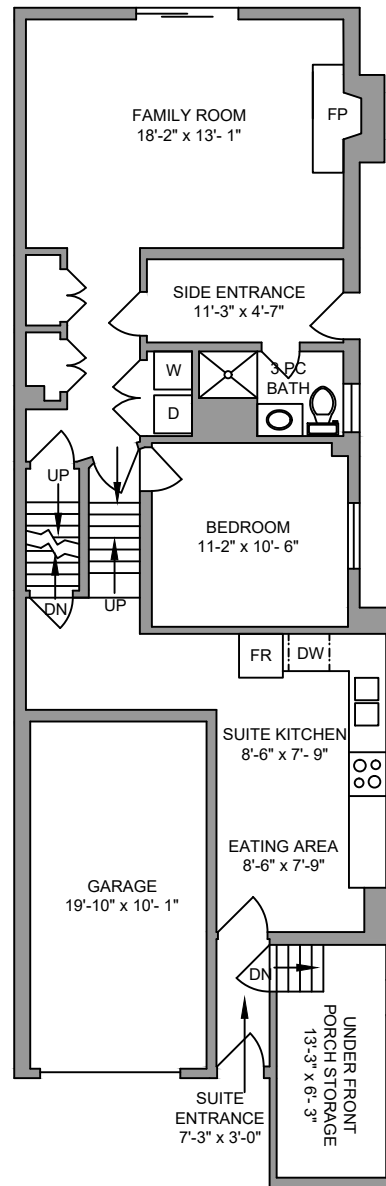


MAIN FLOOR
1155 SQ. FT.
CEILING HEIGHT 8'

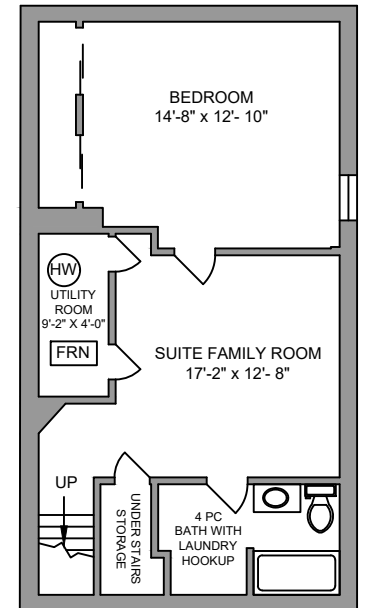


LOWER FLOOR
871 SQ. FT.
CEILING HEIGHT 8'
SUITE CEILING HEIGHT 7'

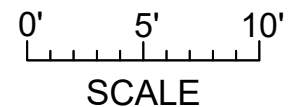
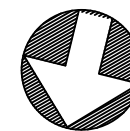


NOTE: LARGE BACKYARD WITH
CONCRETE PATIO AND LARGE SHED
NOT SHOWN ON PLAN

BASEMENT
562 SQ. FT.
CEILING HEIGHT 7'



NORTH



14 CHAPMAN ROAD FEBRUARY 27, 2019 PREPARED FOR THE EXCLUSIVE USE OF MULFORD & EBY REAL ESTATE PLANS MAY NOT BE 100% ACCURATE, IF CRITICAL BUYER TO VERIFY.				
FLOOR	AREA (SQ. FT.)			
	FINISHED	UNFINISHED	GARAGE	BALCONY / PATIO
MAIN	1155	-	-	64
LOWER	871	83	199	UNKNOWN
BASEMENT	562	-	-	-
TOTAL	2588	83	199	